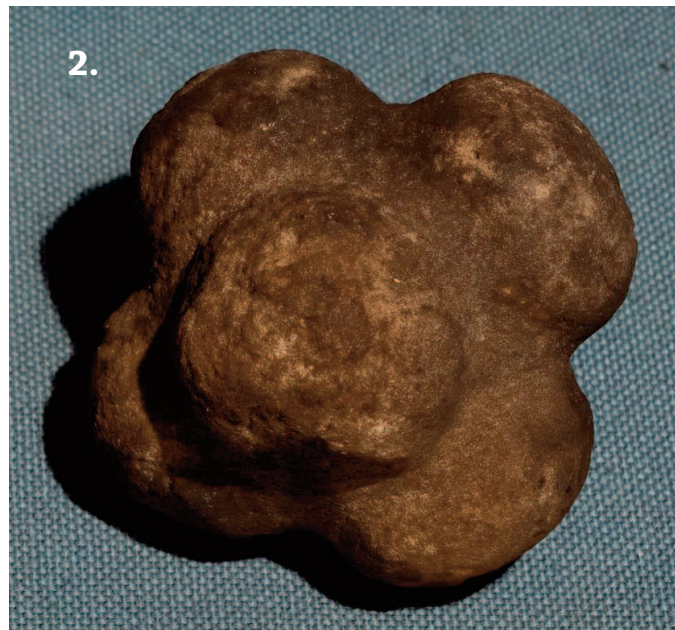
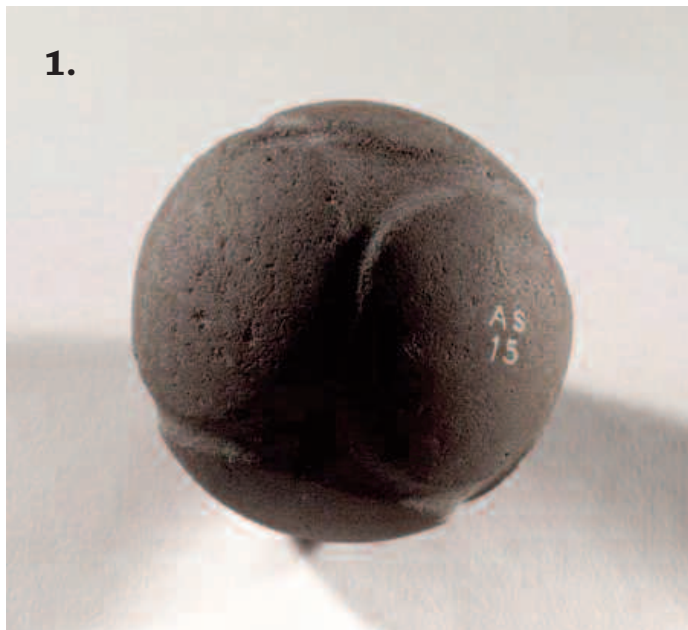


## Carved Stone Balls from the Highlands



1. Benicheilt near Latheron (now in NMS, Edinburgh)
2. Kilphedir (now in Dunrobin Castle Museum)
3. Kinlochewe (now in Gairloch Museum)
4. Novar, near Evanton (now in British Museum)

1. © National Museums of Scotland
2. © Michael Sharpe
3. © Gairloch Museum
4. © Trustees of the British Museum