

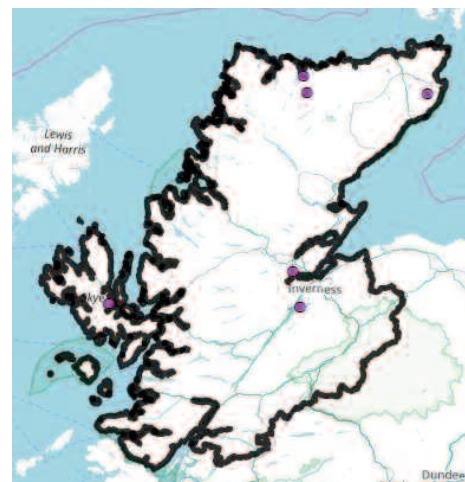
Bronze Gouges

Period: Bronze Age (c. 2500 – c. 800 BC)

Material: bronze

Composite item: wooden handle

These bronze gouges are based on an example from Baile-a-chladaich, Dores, dating to the Late Bronze Age, around 1000 – 800 BC. One of the gouges is 'as cast' with the pouring cup and casting channels still attached. These gouges are socketed, which means they have a gap inside for the handle to be inserted and fixed with a rivet. One of them has a casting flaw, which was caused by the rapidly cooling bronze failing to fill the whole of the mould. This would have been re-melted and cast again.



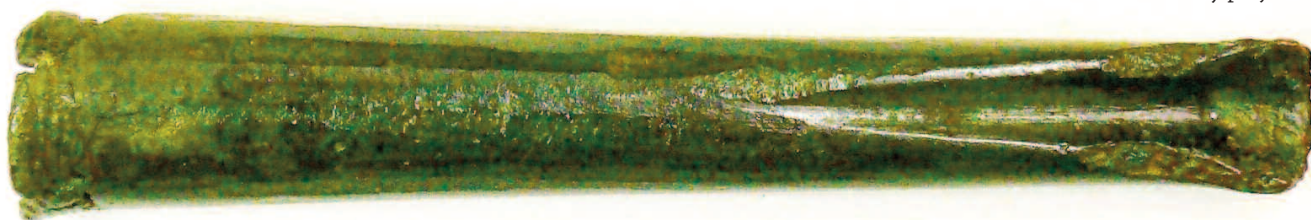
© Feats of Clay project

Gouge from Baile-a-chladaich, Dores, now in Inverness Museum

Gouges were used to carve out a channel in wood. This might have been needed for creating joints, cups, bowls and other dished items. They would have had a wooden handle and might have been used with a wooden mallet. Metal tools were particularly useful for woodworking, so developments in metal tool technology may be related to changes in building techniques.

How do these objects differ from axes?

© Feats of Clay project



Gouge from Wester Ord, near Invergordon, now in NMS, Edinburgh

See also:

When? Bronze Age
CT Bronze Casting

The Experimental Archaeology: Learning about Craft and Technology in the Past project was funded by Historic Environment Scotland and the Heritage Lottery Fund (now National Lottery Heritage Fund).

© Highland Archaeology Services Ltd

v1

